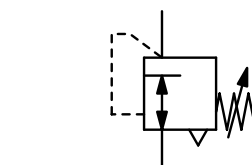


<b>Description</b>	Diaphragm regulator with small dimensions. Suitable for low pressure and high accuracy applications. Its special diaphragm ensure constant outlet pressure even with changing supply pressure and flow fluctuations.	
<b>Media</b>	compressed air or non-corrosive gases	
<b>Recommendation</b>	connection thread G½ for pressure range 0...35 / 140 / 280 mbar	
<b>Supply pressure</b>	max. 10 bar	
<b>Accuracy</b>	response sensitivity: < 0,2 mbar	<b>Air consumption</b> max. 2 l/min depending on outlet pressure
<b>Adjustment</b>	by handwheel with locknut	<b>Relief capacity</b> 14 l/min at 7 mbar above setpoint 70 mbar
<b>Relieving function</b>	relieving, optionally non-relieving	
<b>Gauge port</b>	¼NPT on both sides of the body	
<b>Mounting position</b>	any	
<b>Temperature range</b>	0 °C to 90 °C / 32 °F to 194 °F, for appropriately conditioned compressed air down to -40 °C / -40 °F	
<b>Material</b>	Body: aluminium die-cast Inner valve: stainless steel and galvanised steel Elastomer: NBR/Buna-N, optionally FKM	



**G¼ up to G½, 700 l/min  
2...35 / 800 mbar**

Dimensions			K <sub>v</sub> - value	Flow rate		Connection thread	Pressure range	Order number	D*
A	B	C		m³/h*	l/min*				
mm	mm	mm	(m³/h)			G	mbar		

Precision regulator for low pressure								supply pressure max. 10 bar, relieving, with constant bleed	R110
67	180	25	0.4	42	700	G¼	2 ... 35		R110-020
							2 ... 140		R110-02A
							2 ... 280		R110-02B
							2 ... 400		R110-02C
							2 ... 800		R110-02D
67	180	25	0.4	42	700	G½	2 ... 35		R110-040
							2 ... 140		R110-04A
							2 ... 280		R110-04B
							2 ... 400		R110-04C
							2 ... 800		R110-04D



R110

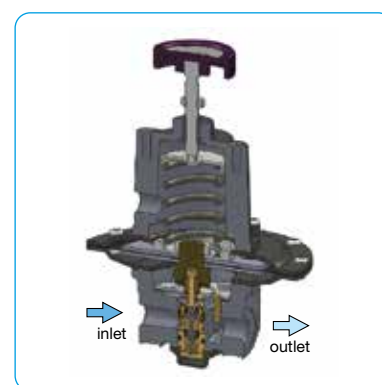


## Special options, add the appropriate letter

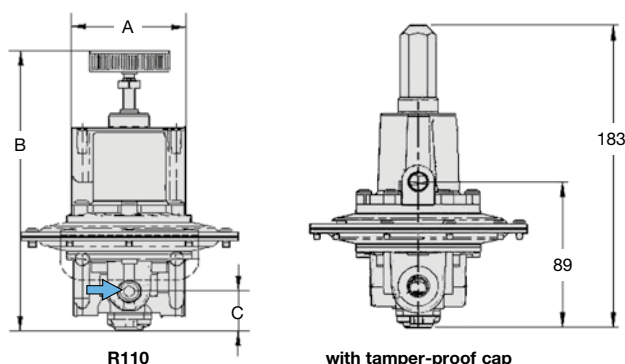
<b>G¾</b>	connection thread	R110-03 .
<b>NPT</b>	connection thread	R110-0 . . N
<b>non-relieving</b>	without constant bleed	R110-0 . . K
<b>reduced bleeding</b>	ca. 1 l/min	R110-0 . . X19
<b>tapped exhaust</b>	connection thread G¼	R110-0 . . X12
<b>FKM elastomer</b>		R110-0 . . V
<b>tamper-proof cap</b>	aluminium, adjustment by screwdriver, total height 183 mm	R110-0 . . T

## Accessories, enclosed

<b>pressure gauge</b>	Ø 63 mm, 0 ... *2 mbar, G¼, capsule type	MA6302-... *2
	Ø 63 mm, 0 ... 600 mbar, G¼, Bourdon tube	MA6302-C6
	Ø 63 mm, 0 ... 1 bar, G¼, Bourdon tube	MA6302-01
<b>gauge connection</b>	made of brass, adapter ¼" NPT to G¼ female	VP-0202N
<b>mounting bracket</b>	made of steel	BW00-58

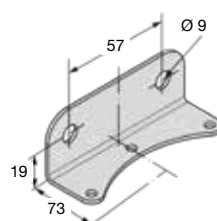


cross-section

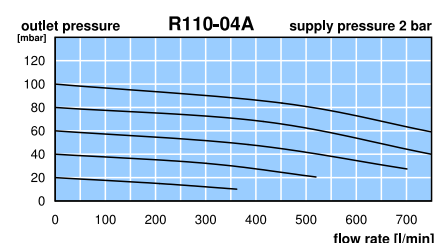


R110

with tamper-proof cap



BW00-58



\*1 at 7 bar supply pressure, 800 mbar outlet pressure and 40 mbar pressure drop  
\*2 B6 = 0...60 mbar, C2 = 0...160 mbar, C3 = 0...250 mbar, C4 = 0...400 mbar

